



MEDIUM MAINS MOTOR

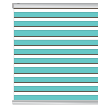
Technical Specification

MEDIUM WIREFREE MOTOR

DM28LEU/S

Electronic Limit, Radio+
2Nm 28Rpm

Application:



Duplex blinds



Roller blinds



Roman blinds



Technical Specification

Options	Medium Wirefree Motor
Power	Wirefree - 230V
Feature	Minimal sound
Bracket	Metal
Lifting capacity	11 kgs (19 sqm)
Minimum Blind Size	650 mm
Speed (RPM)	28 RPM
Torque (Nm)	2
Radio Frequency (MHz)	433 [±]
Technology	RTS
Rated Current (A)	1.25
Rated Power (w)	15
Max Room Temp	40°C
Degree Of Protection(IP)	IP20
Maximum Limit Turn(turn)	∞
Length L1/L2	642/630
Power Required	3 pin plug
Running Time	>6
Cable length	1 mtr
Tube Diameter	45mm (Round Tube)
Suitability for wet Area	No
Motor Weight	1kg

Features

- Switch Direction
- Stall Protection
- Built-in Receiver
- Program Button
- Built-in Lithium Battery
- Jog Mode
- Scene Control
- Smartphone Control
- Scan & Program
- Status feedback



Micro-USB



Memorised Setting



Preferred Stop Position



Status Feedback

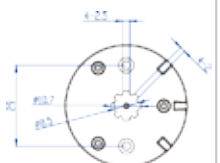
Control System



1 & 15 Channel



Drive Shaft



Limited Head



Blindtex **UAE**

Area M6-10

SAIF Zone Sharjah – United Arab Emirates

Tel: +971 65578051

Email: sales@blindtex.com

www.blindtex.com